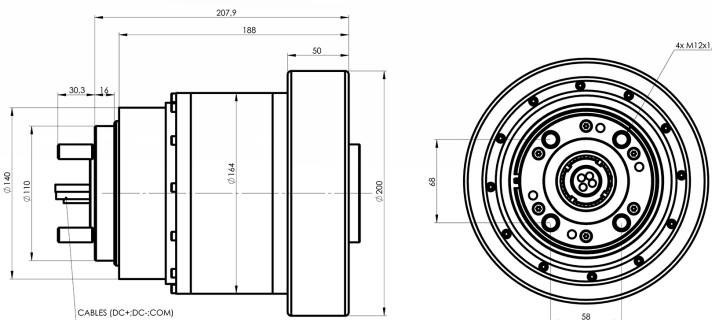


# GEM in-wheel drive

## Type G0.8

Unique fully integrated GEM® in-wheel electric drive with permanent magnets, integrated controller and integrated EM brake.



	STANDARD	CUSTOM
<b>GEM drive</b>	integrated motor controller and integrated EM safe break	
<b>EM brake</b>	40 Nm holding torque, 12-48 V	
<b>Additional function</b>	4Q operation, OpenCAN interface	
<b>Nominal power</b>	700 W	300 ~ 1000 W
<b>Nominal torque</b>	30 Nm	15 ~ 50 Nm
<b>Peak power (20 sec)</b>	1000 W	500 - 1200 W
<b>Peak torque (20 sec)</b>	80 Nm	50 ~ 80 Nm
<b>Speed</b>	200 rpm at 48V	100 ~ 400 rpm
<b>Battery-to-wheel efficiency</b>	up to 92%	up to 92%
<b>Voltage</b>	48 V	40 V ~ 75 V
<b>Wheel rim</b>	rubberized wheel D200 x 50 mm	per customer request
<b>Mounting</b>	one side flange mounting	per customer request
<b>Nominal wheel load</b>	400 kg	up to 400 kg
<b>Cooling</b>	air	
<b>Dimensions</b>	width 210 mm, diameter 164 mm	width 160 ~ 210 mm
<b>Active motor weight</b>	8 kg	4 ~ 8 kg
<b>Total motor weight (active + housing + brake)</b>	12 kg	8 ~ 12 kg
<b>Standard functions</b>	torque regulation, speed regulation, regenerative braking	
<b>Signal interface</b>	CAN	
<b>IP Protection</b>	IP 54	up to IP 67
<b>Temperature range</b>	- 5 ~ +50 °C	-40 ~ +50 °C
<b>Applications</b>	AGV, industrial utility vehicles, trolleys, carts, pallet movers, wheel chairs, mobility scooters, ground support equipment	

For detailed technical information please contact us at [sales@gemmotors.si](mailto:sales@gemmotors.si) or call +386 (0)59 023 893.